

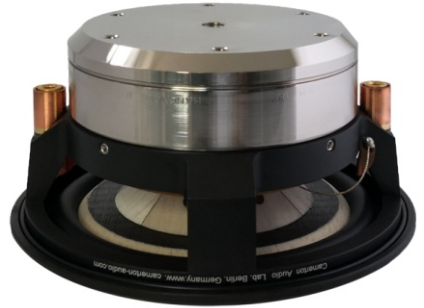
# CAMERTON

## BINOM-A1 Rev.2

### Specifications sheet

Deep upgrade of a main great driver. The aluminum elements of the compact wooden-based diaphragm are replaced with those of isotropic carbon fiber impregnated with a special high-damping compound. The mechanical properties of this material are tens of times higher than those of aluminum alloys. This material allows a more flexible approach to optimizing the operation of the diaphragm, and a special impregnation completely dampens all unwanted resonances. Another plus is the high electrical resistance of this material, which, in combination with its special, hand-made, isotropic structure, completely excludes the occurrence of secondary electric currents in it. This prevents affecting a strong magnetic field on the movement of the diaphragm and causing distortion in it.

The driver's magnetic system has also been upgraded. As a result, it further homogenizes the magnetic field. In addition to gluing, to achieve greater strength, now it is additionally tightened with special bolts. Thanks to the new coating, its color also changed, which became one of the main external differences. It is still mechanically engraved company details, the name and serial number of the driver.



#### Technical specifications:

Frequency response:	35-28000 Hz	Qms	4,63
Efficiency:	89dB / mW	Qes	0.76
Impedance:	8 Ohm	Qts	0.65
Power handling:	35W nom / 50W mus	Mms	6g
Resonance frequency:	48Hz	Rms	0.769 kg/s
THD:	<0.8% (20-20000Hz)	Vas	4.41 l
Conductor material:	Copper C10100	Sd	63.62cm <sup>2</sup>
Diaphragm material:	Wood-Isotropical carbon composite	Bl	6.07 Tm
Mass:	2.5 kg	ETA	0.11 %

